

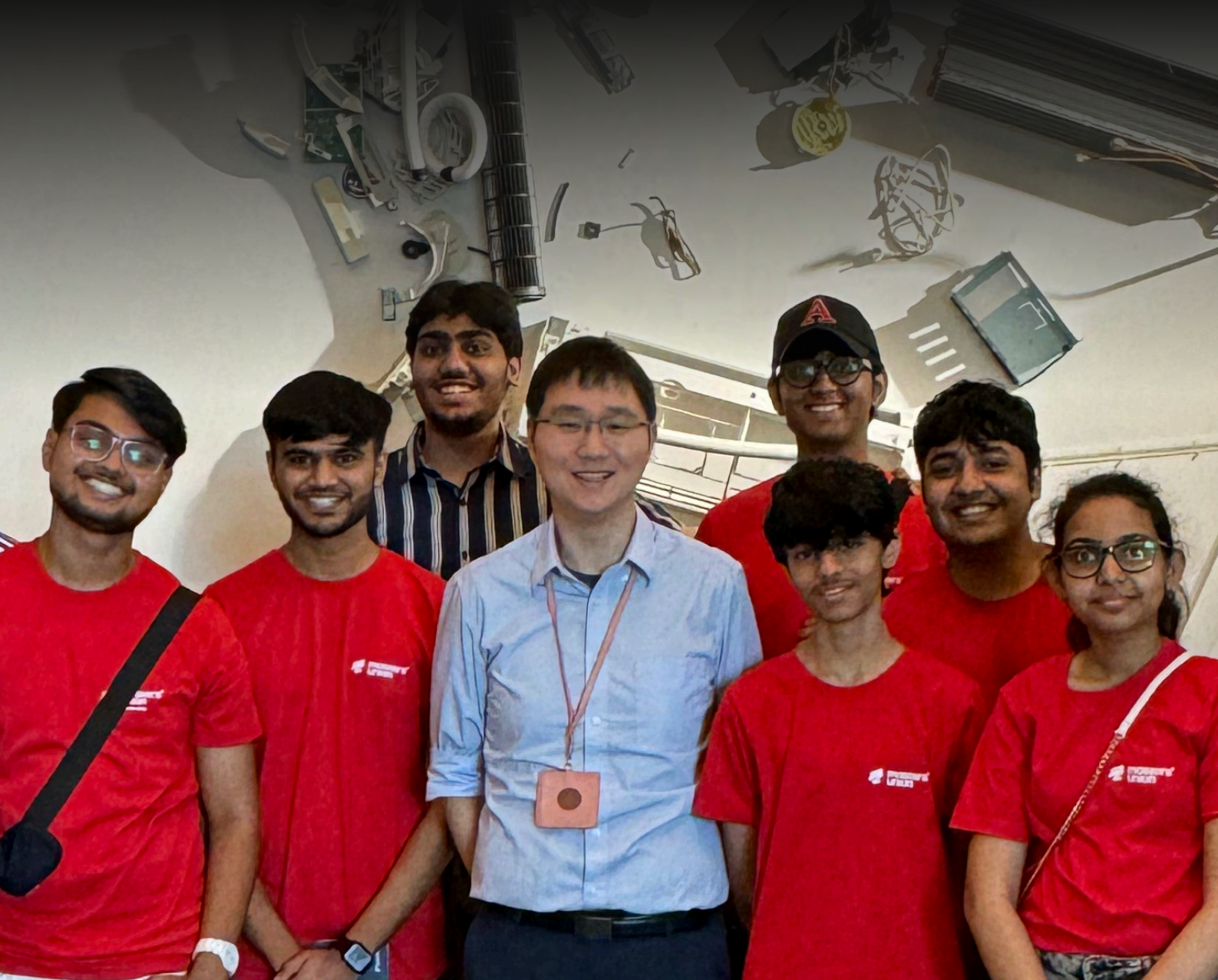
Global Immersion Programme Japan



Tokyo

Kyoto

Osaka



Chairman's Word



The Global Immersion Programme (GIP) at Masters' Union is a transformative experience that prepares students for the complexities of a global economy. By immersing them in key international markets, the GIP bridges classroom learning with real-world challenges.

Students engage with industry leaders, entrepreneurs, and policymakers, gaining insights into emerging trends, cross-cultural dynamics, and innovation. From exploring research hubs in Japan to startups in Silicon Valley, the programme equips students with the skills to think globally and act locally.



Manoj Kohli

Chairman of Board of Governors, **Masters' Union**

Former Country Head, **Softbank**

Former CEO & MD, **Bharti Airtel**

Global Immersion Programme

The Global Immersion Programme (GIP) in Japan took undergraduate students on an exciting journey, providing them with firsthand exposure to the country's business landscape and rich cultural heritage. Over nine days, students visited prominent companies like Rakuten and Nissan, explored innovation hubs such as the Kyoto Research Park and Daikin R&D Center, and connected with industry leaders. They also had the opportunity to visit iconic landmarks, including the Senso-ji Temple, Tokyo Tower, Osaka Castle, and Kyoto's famous sites, gaining valuable global insights and a deeper understanding of international markets.

9

Days

25+

Students

8+

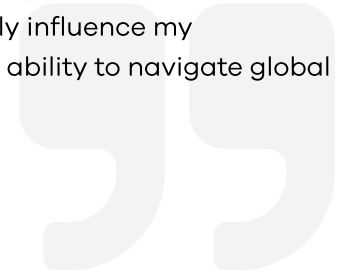
Company Visits



Utkarshsinh Jadeja

Undergraduate Class of 2027

The Japan GIP trip was an eye-opening experience that gave me a real sense of Japanese business culture. It was a great opportunity to connect with industry leaders and get a closer look at how things work in Japan's fast-paced business world. I gained new ideas that will undoubtedly influence my professional journey and enhance my ability to navigate global business challenges.



Key Highlights of GIP Japan





Day 1-2 (Tokyo)

Visit to Senso-ji Temple
& Uniqlo- Ginza Store



Day 3 (Tokyo)

Rakuten, Indian Embassy
& Networking Dinner



Day 9

Reflection and Farewell



Day 8 (Osaka)

Osaka Castle visit

Companies and Places Visited





Day 4 (Tokyo)

Visit to Nissan & Team Lab Planets



Day 5 (Tokyo)

Beyond Next Ventures visit & Bullet Train to Kyoto



Day 7 (Osaka)

Daikin R&D Centre & Osaka Aquarium



Day 6 (Kyoto)

Kyoto Research Park & Kyoto Cultural Tour



Beyond Next Ventures



OSAKA AQUARIUM KAIYUKAN

Industrial Visits





Insights

- Rakuten's ecosystem supports **over 1.5 billion** users globally, integrating e-commerce, fintech, digital content and mobile services under one platform.
- The Rakuten **Super Points program** uniquely incentivizes purchases across all services, creating a seamless reward system that enhances user engagement and retention.
- Rakuten Mobile operates **Japan's first fully virtualized, cloud-native mobile network**, to deliver flexible and scalable telecom services.



Vir Mehta

Undergraduate Class of 2028

Visiting Rakuten provided us with a unique perspective on how the company integrates e-commerce, fintech, and digital content. Their approach to using AI and big data across services, from personalised shopping to financial solutions, stands out in the industry. We also saw firsthand how Rakuten's global strategy and local initiatives, like Rakuten India, creates a strong, unified ecosystem that sets them apart from other companies. Innovation and loyalty isn't just a strategy, it's woven into every part of their ecosystem.

Meeting with **Indian Ambassador**

Day 3 | Tokyo



Insights

- Students got the opportunity to meet the **Ambassador Sibi George**, gaining insights into the significance of Indo-Japanese diplomatic relations.
- The discussion focused on areas of collaboration, particularly in technology, trade, and innovation.
- His views on the growing cross-border opportunities and Japan's pivotal role in India's "**Make in India**" campaign provided a deep understanding of the potential for cooperation in key industries.



Tanvee Maheshwari

Undergraduate Class of 2028

Meeting the Ambassador Sibi George at the Indian Embassy in Japan highlighted the impact of Indo-Japanese partnerships like the Mumbai-Ahmedabad Bullet Train and Japan's crucial role in India's 'Make in India initiative.' This experience highlighted how these collaborations in technology and trade drive progress and strengthen diplomatic ties, showcasing the shared vision of both nations in fostering innovation and sustainable development.

Networking Dinner with Industry Experts



Day 3 | Tokyo



Motonori Imaseki
CEO & Founder, Quest Group



Julian Bashore
Managing Director, Bodo Möller Chemie



Takaki Kobayashi
Managing Director, Nomura Greentech Japan



Ikuo Hiraishi
Founder & CEO, DreamVision Inc



Ankit Khandelwal
Founder & CEO, GroMo



Sachie Tanaka
Assistant Manager, Sumitomo Corporation



Tatsuya Tsubuki
Director, MVP Corporation



Imran Khan
Counsel, Co-Leader India & Middle East Practice Group at Tokyo International Law Office



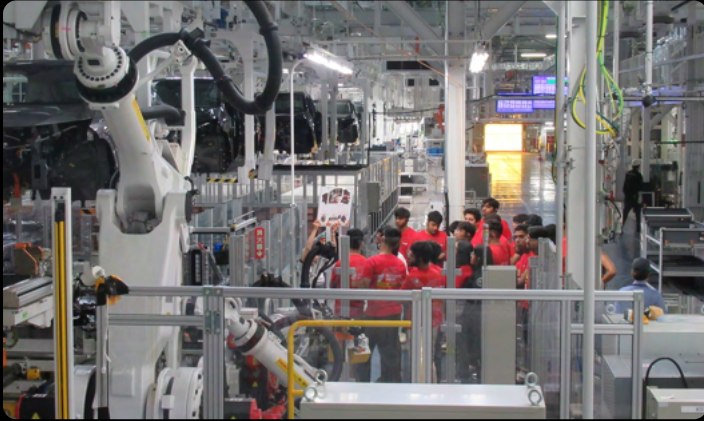
Kavin Shah

Undergraduate Class of 2028

Imagine stepping into a room with the top VCs and industry experts like Motonori Imaseki, CEO of Quest Group, and Takaki Kobayashi, Managing Director at Nomura Greentech. This incredible networking opportunity has broadened my outlook for future business collaborations, job prospects, and strategic partnerships. The connections I made here will undoubtedly play a crucial role in shaping my career and opening doors towards new opportunities.

Nissan Tochigi Plant

Day 4 | Tokyo



Insights

- The **Nissan Tochigi plant utilises state-of-the-art robotic systems** for welding, painting, and assembly, ensuring the highest precision and quality in the production of high-performance vehicles like the Nissan GT-R.
- Nissan incorporates **eco-friendly practices**, such as using water-based paints and **energy-efficient production methods**, making the plant a model of sustainable manufacturing in the automotive industry.
- **Nissan's Kaizen-driven approach** guarantees continuous improvement and top-notch quality in every vehicle produced.



Swayam Gautam

Undergraduate Class of 2027

Visiting the Nissan Tochigi plant was an unforgettable experience. Seeing one of the most iconic cars of our generation come to life—from raw parts to the finished product—was truly mesmerizing. What stood out even more was how seamlessly technology and skilled workers came together to build such a powerful machine. It was impressive to learn that despite full automation, Nissan has managed to keep its workforce intact, highlighting a commitment to both innovation and people.

KOIN (Kyoto Open Innovation Network)

Day 6 | Kyoto



Insights

- **Kyoto research park** is not just a co-working space— it connects over 510 tenant companies, universities, and government institutions, fostering innovation across diverse sectors like ICT, Biotech, and manufacturing
- Kyoto Research Park **offers extensive R&D spaces, prototyping, testing, and access to High-tech solutions**, aiding businesses in product development and research.
- It supports new ventures through coworking spaces, mentorship, and networking, encouraging partnerships with large companies and investors to boost startup growth.



Seerat Virk

Undergraduate Class of 2027

Visiting Kyoto Research Park was an incredible experience. This vibrant hub fosters collaboration between startups like Biome Inc., which focuses on medical technologies, and FLOSFIA Inc., a specialist in advanced semiconductors, alongside corporations and government entities to drive innovation, creating a dynamic ecosystem for cutting-edge solutions.

Daikin Technology and Innovation Center

Day 7 | Osaka



Insights

- The visit introduced **Daikin's** innovative "shade cards" for air conditioners, allowing customers to personalise the aesthetic of their HVAC units, similar to selecting paint colours for walls.
- Daikin's extensive range of HVAC systems, including energy-efficient solutions for air conditioning, heating, and ventilation, went beyond the basic models typically encountered, showcasing advanced technologies.
- **Daikin is a pioneer in smart climate tech and is exploring AI for predictive climate control** in buildings and balancing Innovative technology with traditional engineering practices to enhance both performance and sustainability.



Simren Mehra

Undergraduate Class of 2028

Visiting Daikin was impressive. Their unique approach to utilizing raw materials, also used in industries like missile production and advanced sensors, highlights their versatility. By incorporating these materials into ACS production and other products like paints, chemicals, and fabric coatings, they showcase exceptional resourcefulness. What stood out was their ability to combine innovation with engineering expertise, paving the way for the future of comfort and efficiency.

Cultural Immersion



Sensoji Temple and Traditional Marketplaces

Day 2 | Tokyo



Insights

- **Sensoji Temple**, a symbol of Japan's deep commitment to preserving its cultural heritage, **attracts over 30 million visitors annually**. The temple's traditional rituals and practices continue to captivate tourists, while nearby modern businesses thrive, benefitting from the cultural tourism it draws.
- Outside the temple, the area beautifully blends old traditions with innovative technology, such as **vending machines serving traditional Japanese tea**, highlighting how Japan merges heritage with modern solutions.
- Sensoji Temple exemplifies the **harmony of Japanese culture, where centuries-old traditions coexist with advanced technology**, enhancing both the spiritual and visitor experience.



Atharv Vyas

Undergraduate Class of 2027

Sensoji Temple offers a breathtaking journey into Japan's rich cultural heritage. The ancient charm of its spiritual rituals, vibrant pagodas, and bustling Nakamise Street transports visitors to a timeless era. It's a serene haven that captures the heart of traditional Japan, creating a truly unforgettable experience.



TeamLab Planets

Day 4 | Kyoto



Insights

- **TeamLab Planets spans over 10,000 square feet**, making it one of the largest immersive art museums in Japan, designed to create fully immersive, interactive environments that engage all the senses.
- The museum's use of **3D projection mapping and motion sensors** allows each visitor's movements to directly influence the artwork, creating dynamic, **real-time interactions with the exhibits**.
- The exhibits are spread across multiple vast rooms, each containing different sensory experiences, from floating through water in **The Waterfall of Light** to interacting with **flowers in the Falling Universe of Flowers**, offering a spatial and sensory scale that is rare in most traditional art spaces.



Keshav Kawna

Undergraduate Class of 2027

Walking into TeamLab Planets felt like stepping into a video game, but with real art! The way art and technology came together was mind-blowing—it offered an entirely new way to experience creativity. The immersive environments made me feel like I was part of the artwork, with every step revealing something new. It wasn't just an exhibition, it was a dynamic, evolving experience that redefined what art can be in the modern world.

Bullet Train

Day 5 | Tokyo - Kyoto



Insights

- The **Shinkansen** boasts an impressive average delay of less than 30 seconds per year, making it the **world's most punctual high-speed rail system**.
- **Engineered with energy-efficient technologies and streamlined aerodynamics**, it achieves both high speeds and reduced environmental impact.
- **Connecting major cities across Japan in record time, the bullet train enhances national productivity** and offers travellers a uniquely seamless and comfortable journey.



Aryaman Kapoor

Undergraduate Class of 2028

Riding the Shinkansen is a seamless journey that reflects Japan's commitment to precision and comfort, where every detail—from the smoothness of the ride to the polite conduct of passengers—adds to the experience. As you zip across the landscape, the stunning views of mountains, rivers, and rural villages pass by like scenes from a postcard, making the ride not just fast, but truly unforgettable.

Osaka Aquarium

Day 7 | Osaka



Insights

- **Osaka Aquarium is one of the largest aquariums in the world**, boasting a central Pacific Ocean-themed tank that features iconic marine creatures such as whale sharks and manta rays.
- Its unique multi-level design allows visitors to immerse themselves in marine ecosystems from various perspectives, offering a captivating and dynamic experience.
- Blending fun and education seamlessly, the **aquarium emphasizes marine conservation** through engaging, interactive exhibits that inspire awe and awareness.



Sawaschin Bhuyan

Undergraduate Class of 2028

Osaka Aquarium was an incredible experience. The diverse marine life and the way the exhibits are designed made it feel like I was stepping into the ocean world. What stood apart was the interactive displays that not only made the visit fun but also provided valuable insights into ocean conservation. The mesmerizing central tank, home to majestic whale sharks, was truly the highlight of the journey.

Osaka Castle

Day 8 | Osaka



Insights

- **Osaka Castle** is a symbol of Japan's feudal past and its remarkable journey toward modernization.
- The castle's iconic architecture reflects a harmonious blend of military strength and cultural sophistication, showcasing its enduring legacy.
- It stands as a testament to Japan's commitment to **preserving national heritage** while seamlessly embracing technological progress and innovation.



Anish Adamane

Undergraduate Class of 2027

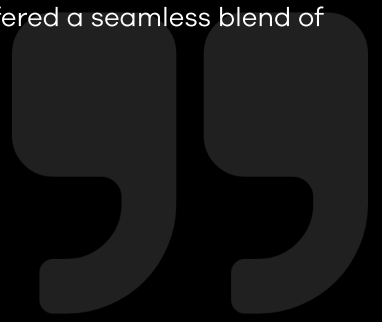
Walking through Osaka Castle felt like stepping back in time. The contrast between the ancient structure and the modern city surrounding it was striking. It made me realise how Japan manages to hold onto its traditions while adapting to the future. I really appreciated how the castle is both a symbol of history and a living part of the city's identity.



Abhijay Jain

Undergraduate Class of 2028

I returned enriched by my time in Japan, where I immersed myself in its thriving business environment and vibrant culture. Touring Nissan's cutting-edge manufacturing plant and exploring Kyoto's historical sites offered a seamless blend of learning and discovery.



Krishna Bansal

Undergraduate Class of 2028

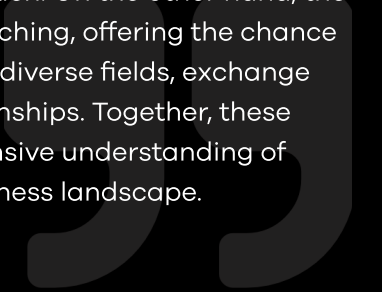
This trip deepened my understanding of global business. The visit to the Nissan Tochigi plant showcased advanced manufacturing, while The Osaka Aquarium stood out, providing valuable insights into marine conservation and Japan's dedication to sustainability through culture and innovation.



Krishnav Sahni

Undergraduate Class of 2028

The Japan Global Immersion Programme was an invaluable experience. Meeting Sibi Gorge at the embassy gave us a unique opportunity to gain insights into Japan's global influence and its diplomatic approach. On the other hand, the networking dinner was equally enriching, offering the chance to connect with professionals from diverse fields, exchange ideas, and build meaningful relationships. Together, these experiences provided a comprehensive understanding of Japan's cultural, political, and business landscape.



Scan the QR



To watch the GIP Podcast



Visit us at

mastersunion.org